

Experiences from Estonian Association of Disabled Woman- empowering for all!

Estonian Association of Disabled Women, Estonia

Jelena Pipper



EPNÜL

EESTI PUUETEGA NAISTE ÜHENDUSTE LIIT



Estonian Association of Disabled Woman

We inform disabled women and society as a whole that:

Disability does not prevent you from being a WOMAN!

We have the same rights, responsibilities, and duties as every other woman:

- the right to an independent life
- starting your own family, being a mother
- education and work
- as well as social activity



The EPNÜL organization more that 20 years old

Tallinn and Harju County Disabled Women Association (THPNÜ)



- In total, ~ 1,324,820 people live in Estonia, of which 699,185 are women, ~ 40% of the total population of Estonia lives in Tallinn and Harju County.
- About 576,265 people live in Harju County. In Tallinn ~ 441,343.
- Approximately 80 million people are one in six people in the European Union with a severe or severe degree of disability. More than one third of people over the age of 75 have a disability, and this makes life very difficult.
- Disabled Women in Tallinn and Harju County ~ 170,000 members. The Tallinn and Harju Disabled Women Association has taken on the task of being an active organization in the North of Estonia to address the problems of women with special needs.

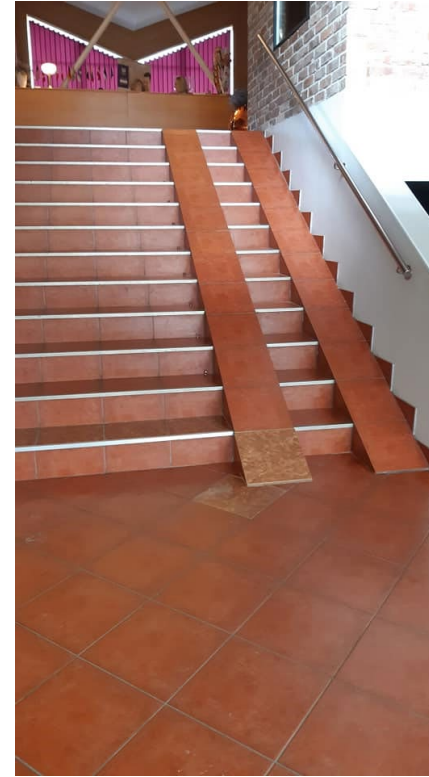
<http://thpnu.epnu.ee/>

Disability by group (statistics from 30.06.19)

Age group	0-17	18-63	64+
Men	8152	32553	25217
Women	4260	32572	55238
Language and speech impediment	336	102	18
Hearing impairment	147	657	358
Movement disability	416	9271	25204
Multiple disability	1147	8302	20804
Others	1155	3466	4770
Visual impairment	69	357	750
Mental disorders	792	7602	2859
No species of disability	18	115	364
Intellectual disability	180	2700	111

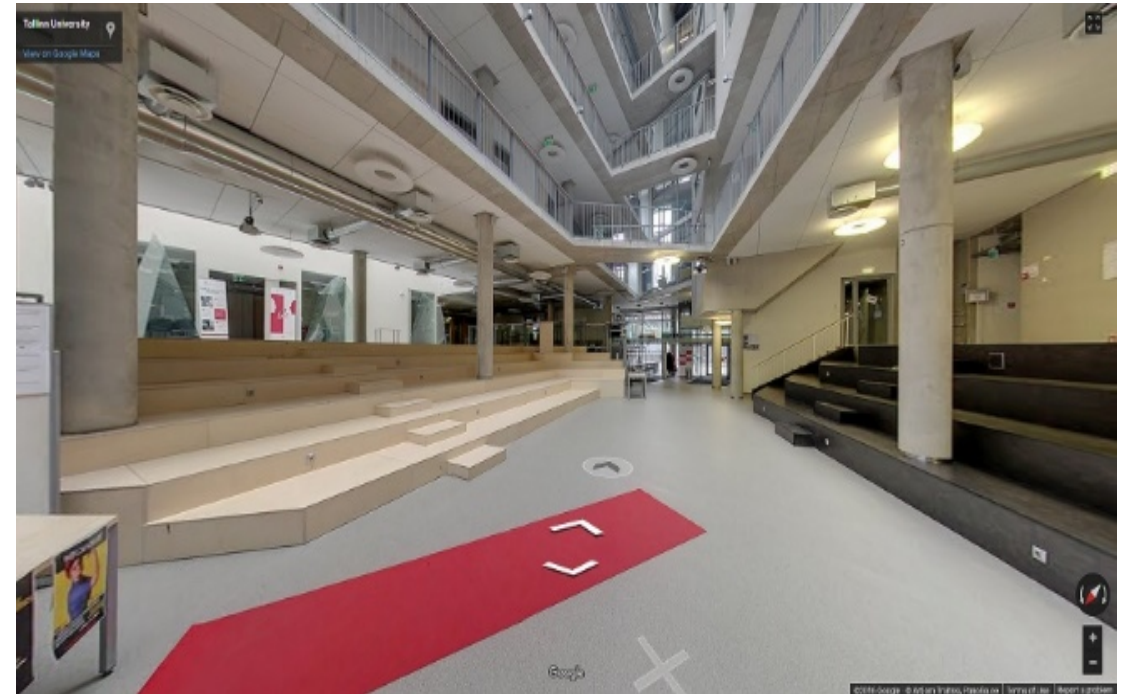
Participation in social life in general for disabled women's

depends on and is related to
environmental accessibility



Participation in social life in general for disabled women's and at first **accessibility to education**

Outside and inside view...



<https://www.err.ee/558317/paalalinna-kool-on-nuud-liikumispuudega-lastele-paremini-ligipaasetav>

At Women's Support Centers,

we offer help and support to women who have been victims of violence against women and their accompanying children.

Only one Women Support Centre are accessible for wheelchair users in Estonia



„Sexuality of the Estonian female population and determinants of reproductive risk behavior, trends, prevention and interventions (ESTRE)“



- At the time of experiencing the violence, there were the most respondents under 18 years of age.
- **11.5%** of the respondents had known their lives threatened by violence.
- There was sexual violence in the last year **nearly 40% of cases are committed by either current or former partner**
- **7.5% of respondents had experienced rape during their lifetime**, including 4.5% before 18 years of age.
- **In more than a quarter of cases**, a family member or other close person was named as the perpetrator of physical and sexual abuse.

The Estonian Chamber of Disabled Persons



EESTI PUUETEGA INIMESTE KODA
THE ESTONIAN CHAMBER OF DISABLED PEOPLE

- provides additional counseling services to persons applying for assessment of work ability or severity of disability and their legal representatives.
- But who provides additional counseling service forms of violence against women that have not been adequately addressed?



Estonian Association of Disabled Woman

Organized every year twice
training on the topic

“Gender and Disability”



The aim of the seminar was to raise the awareness of people with disabilities about gender equality, the ability to see multiple discrimination and stand up for their rights, develop the capacity of people with special needs, active citizenship and better cooperation between different disability organizations.

Tallinn and Harju County Disabled Women Association (THPNÜ)



- A short documental movie “Am I really alive”
- First public photo session „Wonderful Women“ for and with women and girls with disability
- “Opinion Festival” - five differently disabled women took part, discute and presented the various topics on women life circle (education, work, violence, work career, motherhood, leisure time and sport activity)



To promote and protect the human rights of people with disabilities

- NGO Elulin and the Tallinn and Harju County Association of Disabled Women (THPNÜ) have produced guidance material to promote and protect the human rights of people with disabilities in year 2017
- The prevalence of trafficking in human beings in Estonia is significant, and the majority of victims of trafficking have been people with special needs and disabilities.



EPNÜL
EESTI PUUETEGA NAISTE ÜHENDUSTE LIIT

Can the state be intolerant?

- According to the Chancellor of Justice Act, **from 1 January 2019**, the Chancellor of Justice shall perform the functions of promoting, protecting and monitoring the implementation of the **Convention on the Rights of Persons with Disabilities**.



Can the state be intolerant?

- From time to time, the mournful situation in Estonian special care institutions is reported in the media. The Chancellor of Justice, the Rescue Board and other supervisory authorities make recommendations and injunctions, but the situation is not improving.
- Why?



Ülle Madise, Chancellor of Justice, convenes

- an advisory board to advise the Chancellor of Justice on the **protection and promotion of human rights**.
- Member Jelena Pipper
- a Council of Disabled Persons to advise the Chancellor of Justice in the discharge, **promotion and monitoring of the rights of persons with disabilities**.
- Member Mare Abner



Disability and hostility - recommendations

- **Improve knowledge of (hate)** crimes against people with disabilities. In the future, databases and / or surveys should show how widespread the problem is in Estonia. The Department of Justice and the courts could analyze the extent to which crimes against the person, where the victim is known to be disabled, reach the courts.
- The issue of amending the Penal Code to include disability offenses against people with disabilities **requires a thorough analysis** of the views of disability advocacy organizations

Disability and hostility - recommendations

- **Access to justice for the disabled, the victim support system and the judiciary must be accessible.**

Accessibility refers to physical accessibility (**spaces accessible and comfortable to use, for example, for people with reduced mobility, the blind, partially sighted, people with intellectual disabilities**) and system operation accessibility, which includes awareness of accessibility for people working in it (e.g.) and the ability to respectfully respect people with disabilities.

- Awareness of the rights and hate crimes of people with disabilities **is needed by a wider range** of people and professionals.

Disability and hostility - recommendations

- **Outreach to the general public** to enable people to be aware and aware of violence against a person with a disability and to turn to law enforcement to protect the vulnerable person.
- **Lighten the burden on carers as overwork and stress at home are a risk of violence.** In addition to services that would ease the workload of caregivers in caring, counseling and information would be needed to personal assistants prevent violence and reduce stress at home.

Disability and hostility - recommendations

- There **is a need for individuals to act as community mediators** in situations where the disabled person is subject to a hostile act that is not a crime and therefore cannot be investigated by the police but which can have a significant impact on the quality of life of the disabled person. For example, embarrassing neighbors, who often unjustifiably call the police, petitions from people in the area, and campaigns to prevent the establishment of a disability accommodation facility or service in their neighborhood.

Start filling the data gap !

- As a first step, the Ministry of Social Affairs and the Ministry of Justice could start filling the data gap.

At present, we do not know how often and what kind of violence and abuse people with disabilities experience in Estonia.

Thank you for listening ☺

Your questions are welcome

jelena.thpnu@epnu.ee

+372 55 68 9895

<http://thpnu.epnu.ee/>

<https://epnu.ee/>

